

Technical Sheet

For Presence Sensor with Constant Lighting

CSBPC-02/00.1



The worldwide STANDARD for home and building control

CHARACTERISTICS

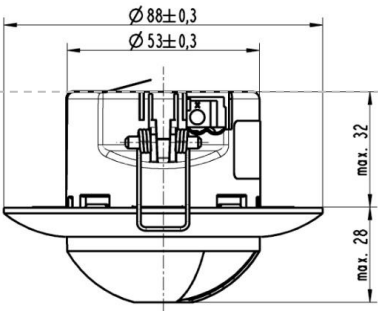
- Brightness measuring.
- Motion detector and Presence detector, which can be locked or released via object.
- The brightness measuring via internal light sensor or KNX, and the internal sensor measuring can be calibrated via object or a correction factor.
- Presence detector additional HVAC applications control output, as such heating, ventilating and climate control of the room.
- Motion or Presence detector can be integrated control with ambient brightness.
- Use as single device or as main detector, respectively secondary detector, to extend the presence detection zone.
- Sequence operation for the Motion or Presence detector
- Integrated 2-level light control (switching).
- Integrated constant light level control (dimming).

PARAMETERS

Bus supply	Bus voltage	21-30V DC, - Via KNX/EIB
	Bus current	approx.10mA
	Bus consumption	approx. 300mW at 30V DC
Connection	EIB/KNX	Bus connection terminal
Presence detection	Passive infrared (PIR), Horizontal 360°, vertical approx. 105°, 288 sectors	
Brightness measurement	Contrast measurement, 20~1000LUX, the upper limit after calibration is 20000 LUX	

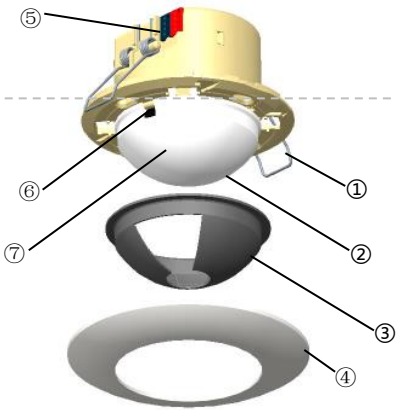
Installation	Ceiling mounting	
Protection class	IP 20, to EN 60529	
Temperature range	Operation	-5 °C ... + 45 °C
	Storage	-20 °C ... + 55 °C
	Transport	-20 °C ... + 70 °C
Environment	Humidity	5~93%,except condensation

DIMENSIONS



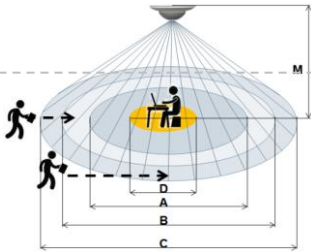
Model	Dimension	Weight
CSBPC-02/00.1	88 mm x 63 mm	0.07kg

DESCRIPTIONS



- ① Fixing clamps
- ② Detector lens
- ③ Shade
- ④ Design ring
- ☐ KNX/EIB bus connection terminal
- ☐ Programming button
- ☐ Programming LED position

INSTALLATION DIAGRAM



M	A	B	C	D
5.0	-	8.5	14	3.0
4.0	-	7.5	12	2.3
3.5	5.5	6.5	10	2.0
3.0	5	6	8	1.6
2.5	4.5	5	7	1.2

Above table shows the maximum reachable diameter in meter of the different areas for different installation heights (M).

The detection range is divided in following areas:

Detection of a person

- A. sitting in working desk height (0.8m)
- B. walking straight to the detector
- C. walking across the detector
- D. Area of the brightness measuring in working desk height (0.8m)

ATTENTION OF INSTALLING

1. Keep it far away fridge, air conditioning, and stovepipe, where temperature changes violently.
2. In a certain temperature, speed of wind affects a little.
3. If ambient temperature approaches body temperature, the sensor will lose efficacy.
4. Between the sensor and detected area must not have stumbling block.
5. Sensor can not be directly on the windows and doors, and where there is direct sunlight. Air flow and dramatic changes in light will case sensor generates fault alarm.
6. The device must be mounted and commissioned by an authorized electrician.
7. The device is intended for ceiling mounting. And recommended mounting height for constant light level control: 2.4m~3.0m

IMPORTANT INFORMATION

Installation and commissioning of the device may only be carried out by trained electricians. The relevant standards, directives, regulations and instructions must be observed when planning and implementing the electrical installation.

●Protect the device against moisture, dirt and damage during transport, storage and operation!

●Do not operate the device outside the specified technical data (e.g. temperature range)!

Should the device become soiled, it may be cleaned with a dry cloth. If this does not suffice, a cloth lightly moistened with soap solution may be used. On no account should caustic agents or solvents be used.