



CSBP-02/00.1

The Sensor BP is mainly used in building control systems; it can be connected with other devices via the bus. The Sensor BP connects to the bus through the EIB connection terminals without additional supply voltage. The sensor is mounted mostly on ceiling, firstly drilling then fixed by the left and right shrapnel.

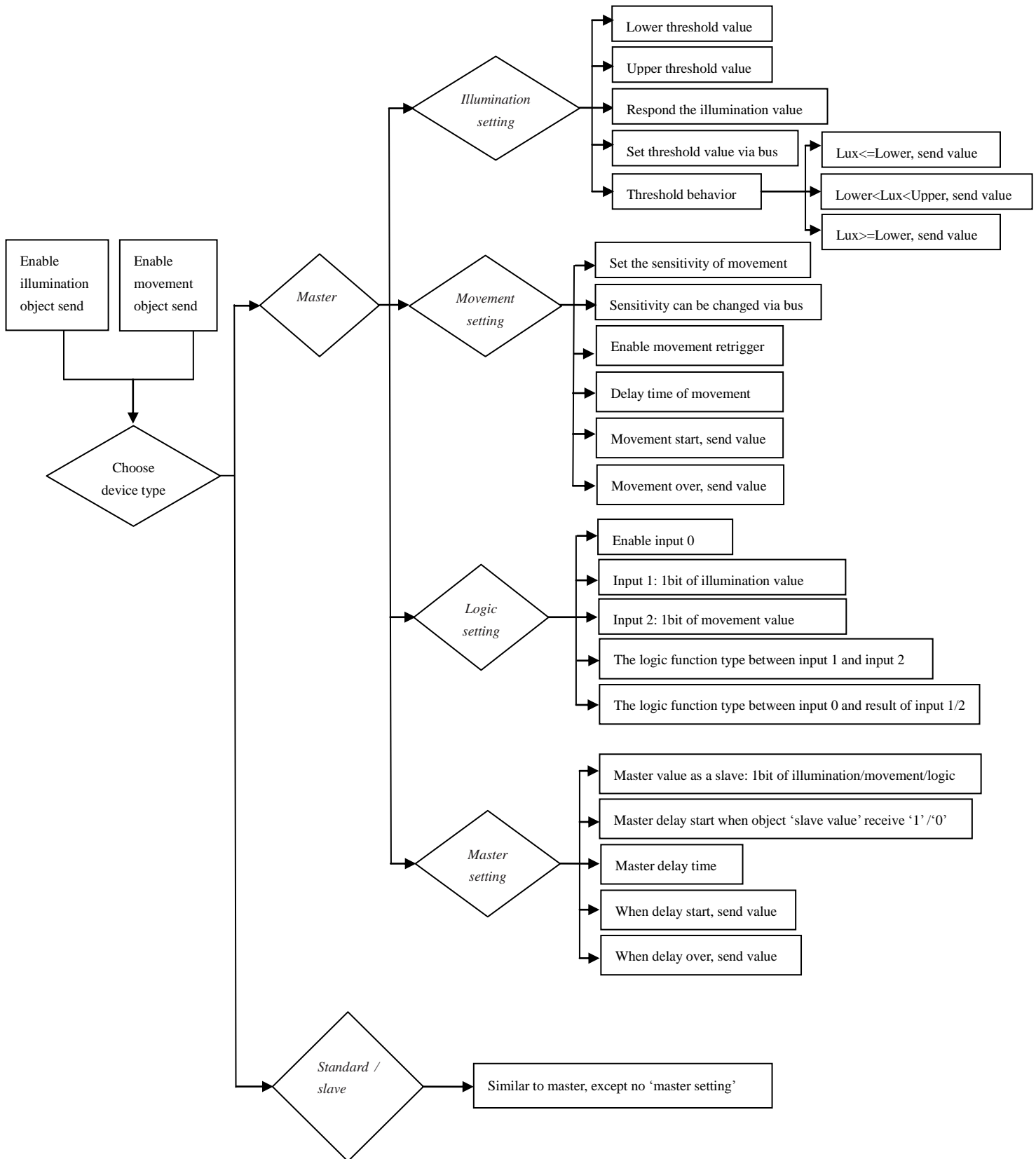
Sensor BP is a device that can sense movement signal and brightness signal, and transmit induction information to other devices, such as dimmers, relays. The Sensor BP is mainly used with the brightness of the occasion, or the need to monitor the situation, if there is subject movement, and then it will perform actions.

Product functions are summarized as follows:

- ◆ Illumination level: 0lux~65535lux, resolution 1lux
- ◆ Movement detector area: high sensitivity (4m~5m), low sensitivity(5m~7m)
- ◆ Illumination output with 3 data types, the values can be sent cyclically
- ◆ Movement detector output with 3 data types, the values can be sent cyclically
- ◆ Illumination with threshold function
- ◆ Movement detector sensitivity with level 1~10
- ◆ Logic (AND, OR, XOR) function among illumination value, movement detector value and input value, logic output with 3 data types, the output values can be sent cyclically
- ◆ Can be set Master-Slave interworking, the master output with 3 data types
- ◆ Illumination enabled, Movement detector enabled and logic enabled function

# Function Overview

**K-BUS®**



power supply	Bus voltage	21-30V DC, via the EIB bus
	Current consumption	Max. 12mA
	EIB/KNX	
	Power consumption EIB/KNX	Max. 360mW
Operation/display	Red LED and push button	Assigning the physical address
	Green LED flashing	Indicate the device running normally (OK)
Connections	EIB/KNX	Bus connection terminal
Sensing distance	Diameter/Radius	7M/3.5M
Temperature range	Operation	-5 °C ... 45 °C
	Storage	- 25 °C ... 55 °C
	Transport	- 25 °C ... 70 °C
Ambient condition	Humidity	<93%,except dewing
CE norm	In accordance with the EMC guideline and the low voltage guideline	
Certification	EIB/KNX- certified	
Mounting	Mounted in the ceiling, fixed by the left and right shrapnel	
Dimensions	91×74×76mm	
Weight	0.05KG	