

KI/U 0401.1

The Universal Interfaces achieve the functional applications via conventional push buttons/switches, communicate by technical binary, which are used to control the devices such as the Dimmer Actuator/the Relay Actuator, to control domestic appliance indirectly. At the same time, they also enable the control of LEDs. The extremely compact design enables the device to be inserted in a conventional 60 mm wiring box.

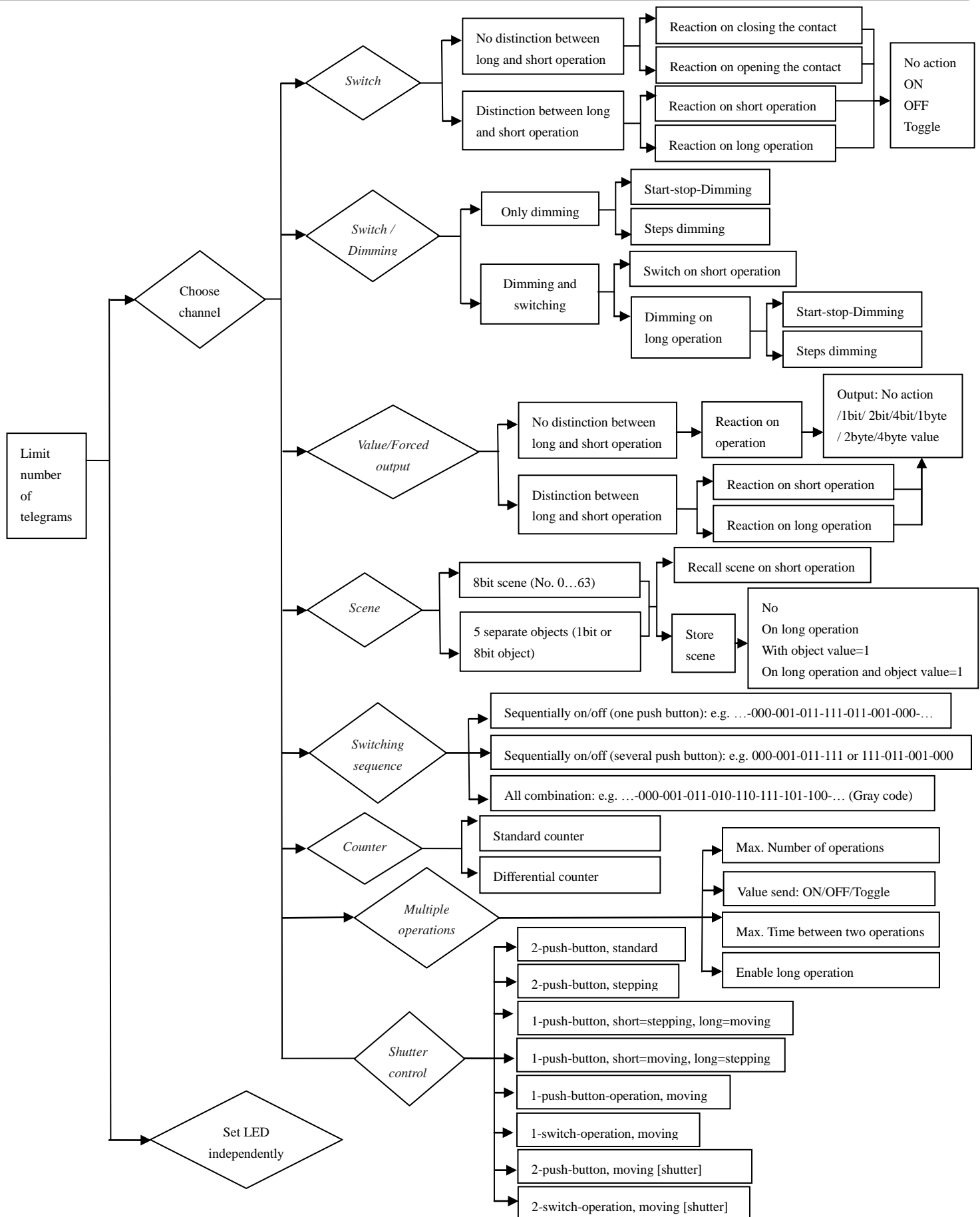
The Universal Interfaces connect to the bus through the EIB connection terminals and have no use for additional supply voltage.

The Universal Interfaces have many functions that can be used in a wide variety of application areas. The following list provides an overview:

- ♦ Switching and dimming function.
- ♦ Control of blinds and shutters.
- ♦ Sending of values e.g. temperature values, water line.
- ♦ Invoke and storing of scenes.
- ♦ Trigger an LED for reporting an operation.
- ♦ Operation of various loads by multiple push button actions.
- ♦ Operation of several loads in a fixed switching sequence.
- ♦ Standard counting and differential counting.

Function Overview

K-BUS®



Power supply	Bus voltage	21~30V DC, via the EIB bus
Input/output	4 channels	Can be individually parameterized as inputs or outputs Bus length ≤10M
Input	Scanning voltage	20 V DC
	Input current	5 mA
Output	Output voltage	5V DC
	Output current	max.2.5mA, limited via series resistor of 2 KΩ
	Safety	Short-circuit-proof, overload protection, reverse voltage protection
Operating and display elements	(Red) LED and push button	for assigning the physical address
	(Green) LED flashing	Indicate the application layer works normally
Connections	Input/output	2*5-pin cables, approx. 30 cm long, can be extended to max. 10 m
	EIB bus	via bus connecting terminal
Ambient temperature range	Operation	-5°C ... 45°C
	Storage	-25°C ... 55°C
	Transport	-25°C ... 70°C
Miscellaneous	CE norm	in accordance with the EMC guideline and the low voltage guideline
	Certification	EIB-certified
	Mounting	in switch box, 60 mm
	Dimensions	46×46×11.7mm
	Weight	0.05 KG