



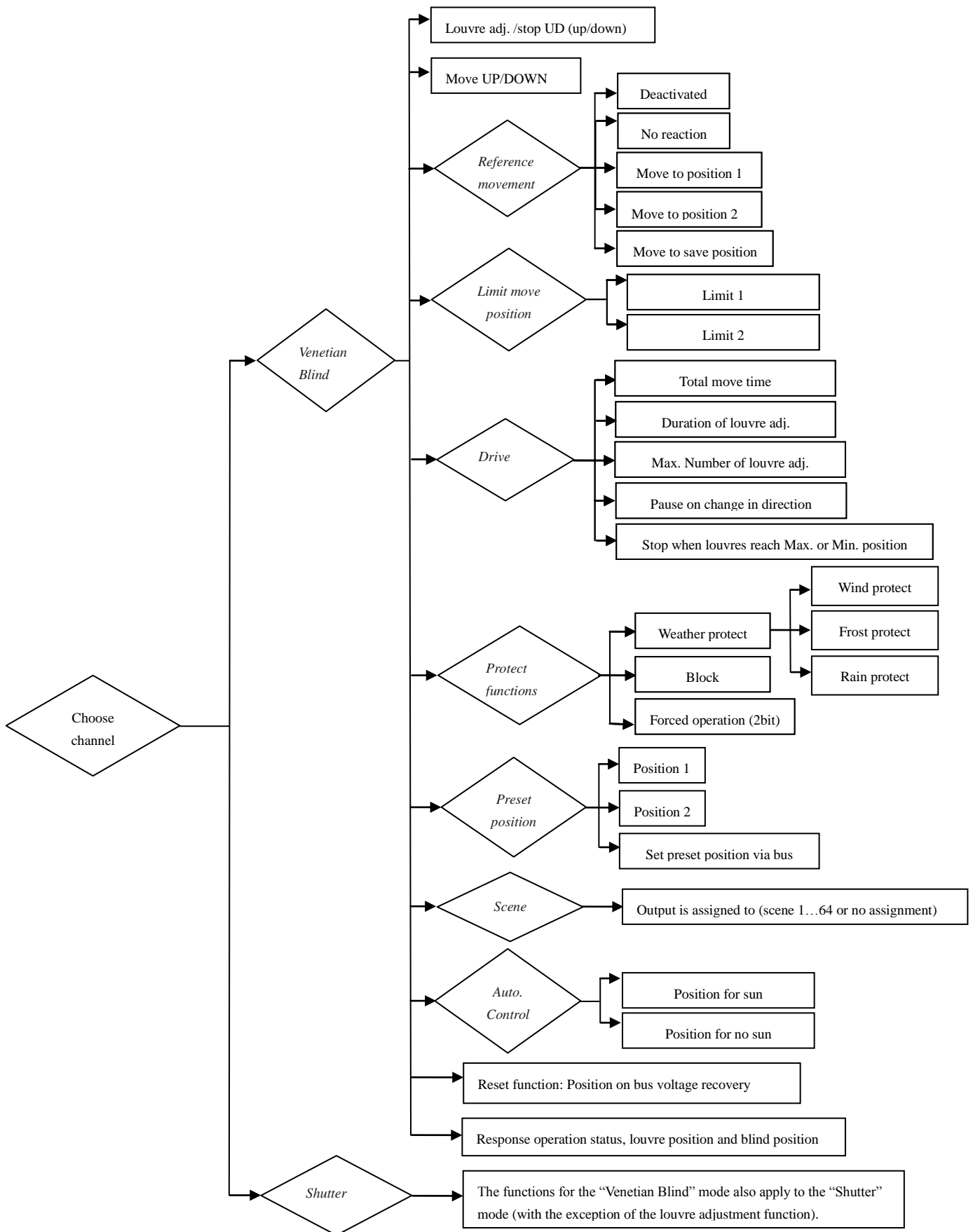
The Shutter actuator is the modular installation devices, which adopt screw terminal to achieve electrical connection. The connection to the EIB/KNX bus is established via a bus connecting terminal. The input need connect 230V AC operating voltage for the Shutter actuator.

It is possible that working mode of the Shutter actuator is switched between manual operation and automatic operation by pressing the Man. Button about 2s, and the Max. LED will display the current operating status. Push buttons are located at the front of the device, which are used to raise and lower the Shutter/Blind manually, to stop the Shutter/Blind movement and for Louvre adjustment. The current direction of movement or the current limit position is displayed via LEDs.

The output contacts for the directions UP and DOWN are mechanically interlocked so that voltage cannot be applied at both contacts at the same time.

The following functions can be set via the application program:

- ◆ Movement UP/DOWN
- ◆ Stop/Louvre adjustment
- ◆ Move into preset position (up to 2 preset positions)
- ◆ Set preset position (modification of the preset position during operation)
- ◆ Move to position 0...100%
- ◆ Adjustment louvre to position 0...100% (only Blind working mode)
- ◆ Scenes
- ◆ Automatic sun protection
- ◆ Monitoring of wind, rain and frost protect (cyclical)
- ◆ Block
- ◆ Forced operation
- ◆ Status display of the current position, status display of the current operating mode
- ◆ LED display
- ◆ Two operation mode: Venetian Blind and Shutter



Power supply	Operating voltage	21~30V DC, via the EIB bus, for automatic operation or manual operation
	Current input	12mA
	Power consumption via EIB	<360mW
Outputs	Number of outputs	4 independent outputs, each with 1 changeover contact (UP/DOWN mechanically interlocked)
	Nominal voltage	230V AC
	Max. switching current	6A
Operating and display	Red LED and push button	For assignment of the physical address
	Green LED flashing	Indicate the device running normally (OK)
	UP/DOWN buttons	2 push buttons per output for UP and DOWN (by long operating) or STOP/Louvre adjustment (by short operating)
	Display of movement direction and position	2 LEDs per output for UP and DOWN (Movement/Adjustment) or the very top/bottom
	Man./Auto push button	For switchover between manual operation and automatic operation.
	Man./Auto LED	For displaying the operating mode, manual operation or automatic operation
	Connections	Load circuits
	230V AC drive voltage	2 screw terminals for L, 2 screw terminals for N
	EIB/KNX	Bus connecting terminal (black/red)
	Wire range	Finely-stranded: 0.2 – 2.5mm <sup>2</sup> Single – core: 0.2 – 4.0mm <sup>2</sup>
Type of protection	IP 20, EN 60 529	
Temperature range	Operation	-5°C .....+45°C
	Storage	-25°C .....+55°C
	Transport	-25°C .....+70°C
Design	Modular installation device, proM	

Housing, Colour	Plastic, White
Mounting	On 35mm mounting rail, DIN EN 60 715
Dimensions	90*72*64.2mm (H*B*T)
Weight	0.25KG
Certification	EIB/KNX certified
CE norm	In accordance with the EMC guideline and the low voltage guideline