

KA/D 04.L1.1

The dimmer with LED constant current drive can drive LED directly, has four channels, each channel is independent and with two independent output. The output current of each channel can be set by linked switch current button and channel switch current button and can output 350mA/700mA or 700mA/1A. *—needs attention when the output current exceeds the rated current of the load, the load probably will burn out, for example, cannot use a 700mA output to drive 350mA LED. Meantime, in the case of full load, if all LEDs are 350mA, the dimmer can output 8 folds, but if some LEDs are 700mA or 1A, it cannot output 8 folds in some configuration, or the LED cannot reach expectant brightness value. The details are described in user manual.* When the output current is set manually, its value can be known via relevant indicators.

The output can connect with some small power dimmable LED lights. These LEDs can be switched, dimmed, recall scene or other operations via the bus.

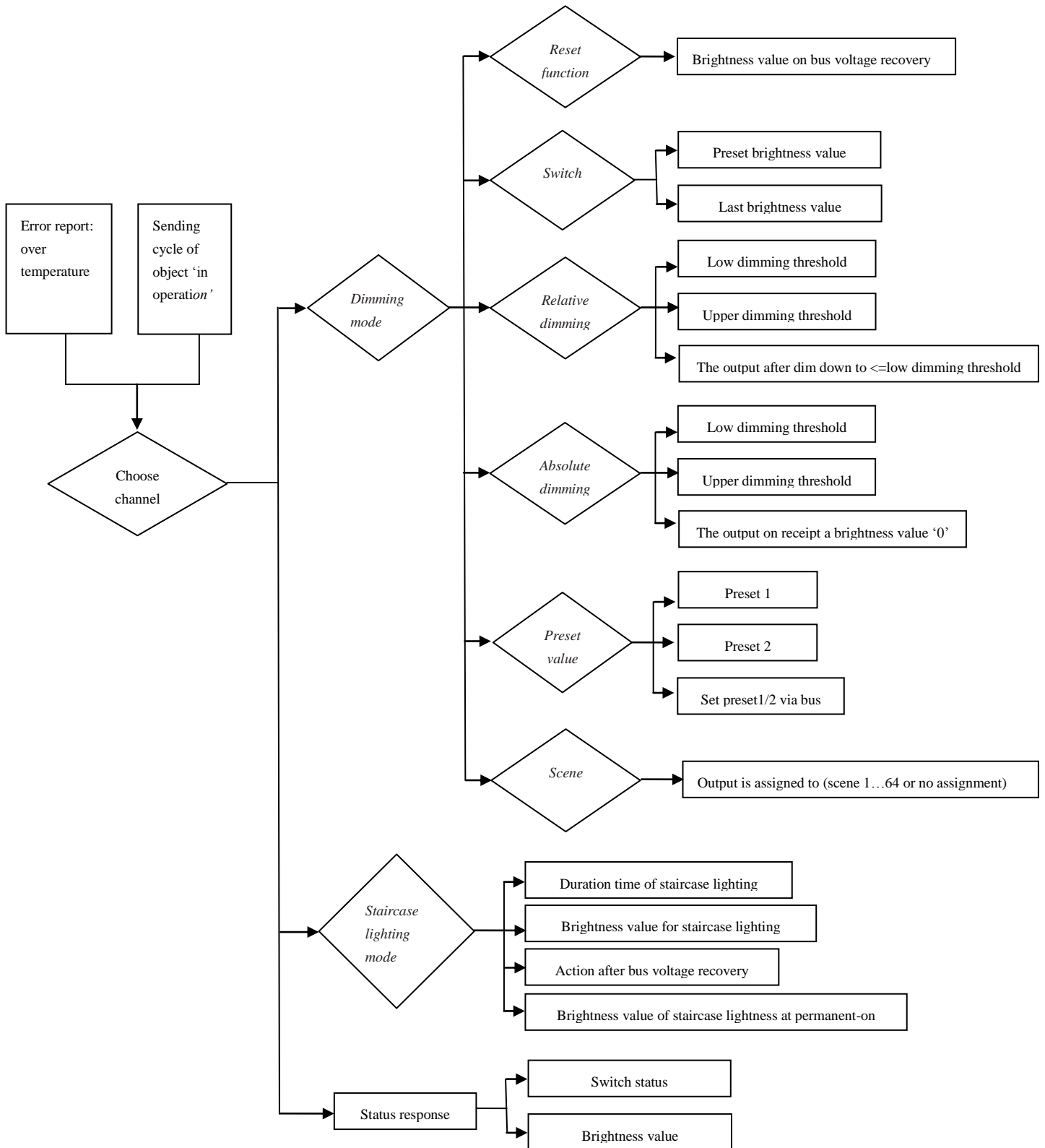
The devices adopt screw terminals to achieve electrical connection; the connection to the EIB/KNX bus is established via a bus connecting terminal. The input need connect a 12V~48V DC operation voltage.

The following list provides a functional overview:

- ◆ Switching the LED light
- ◆ Relative dimming
- ◆ Absolute dimming
- ◆ Status report, error report
- ◆ Setting 15 scenes
- ◆ Staircase lighting function
- ◆ Bus recovery (or reset) function
- ◆ Preset value and modify preset value functions
- ◆ Set output current for per channel manually
- ◆ Switch/relative dimming via manual buttons

# Function Overview

**K-BUS®**



<b>Power supply</b>	Operating voltage	21-30V DC, via the EIB bus
	Input	12-48V DC
<b>Output</b>	4 channels	Each channel with two outputs
	Current	Constant current 350mA/700mA
	Load voltage	3-48V DC
	Safety	Short-circuit and excess temperature protection
<b>Connections</b>	EIB/KNX	EIB bus connection terminal
	Inputs/outputs	Using screw terminals
<b>Operation and display</b>	Button and red LED	For assigning the physical address
	Green LED flashing	Indicate the application layer running normally
	LEDs for Output	Indicate output status per channel, LED on mean the channel has output, LED off mean the channel has not output.
	Manual buttons	Switch via a short operation, relative dimming via a long operation
	LED for a channel	The LED on mean output current of the channel has increased by 350mA, or else no increase
	Switch current button for a channel	Set output current for a channel, when switch on, output current of the channels is added 350mA, and its LED on; or else no add
	LEDs for all channels	The LED on mean output current of all channels have increased by 350mA, or else no increase
	Switch current button for all channels	Set output current for all channels, when switch on, output current of all channels is added 350mA, and its LED on; or else no add
<b>Type of protection</b>	IP 20 , EN 60 529	
<b>Temperature</b>	Operation	-5 °C ... + 45 °C
	Storage	- 25 °C ... + 55 °C
	Transport	- 25 °C ... + 70 °C
<b>Ambient</b>	Humidity	<93%, except dewing
<b>Mounting</b>	On 35mm DIN rail	
<b>Dimension</b>	90×72×64.2 mm	
<b>Weight</b>	0.3kg	