

The dimmers carry out dimming via phase modulation, have 1channel, 2channels and 4channels, each output of them is independent, which can connect with dimmable lamps, such as incandescent lamps, HV halogen lamps, LV halogen lamps(with conventional or suitable electronic transformers), dimmable energy saving lamps and LED. These lamps can be switched, dimmed, recall scene or other operations via the bus.

The device has an integrated short-circuit and excess temperature protection.

The devices adopt screw terminals to achieve electrical connection; the connection to the EIB/KNX bus is established via a bus connecting terminal. The input need connect a 230V AC operation voltage.

The following list provides a functional overview:

- ◆ Switching the light
- ◆ Relative dimming
- ◆ Absolute dimming
- ◆ Status report, error report
- ◆ Setting 15 scenes
- ◆ Staircase lighting function
- ◆ Bus recovery (or reset) function
- ◆ Preset value and modify preset value functions



KA/D 0103.1



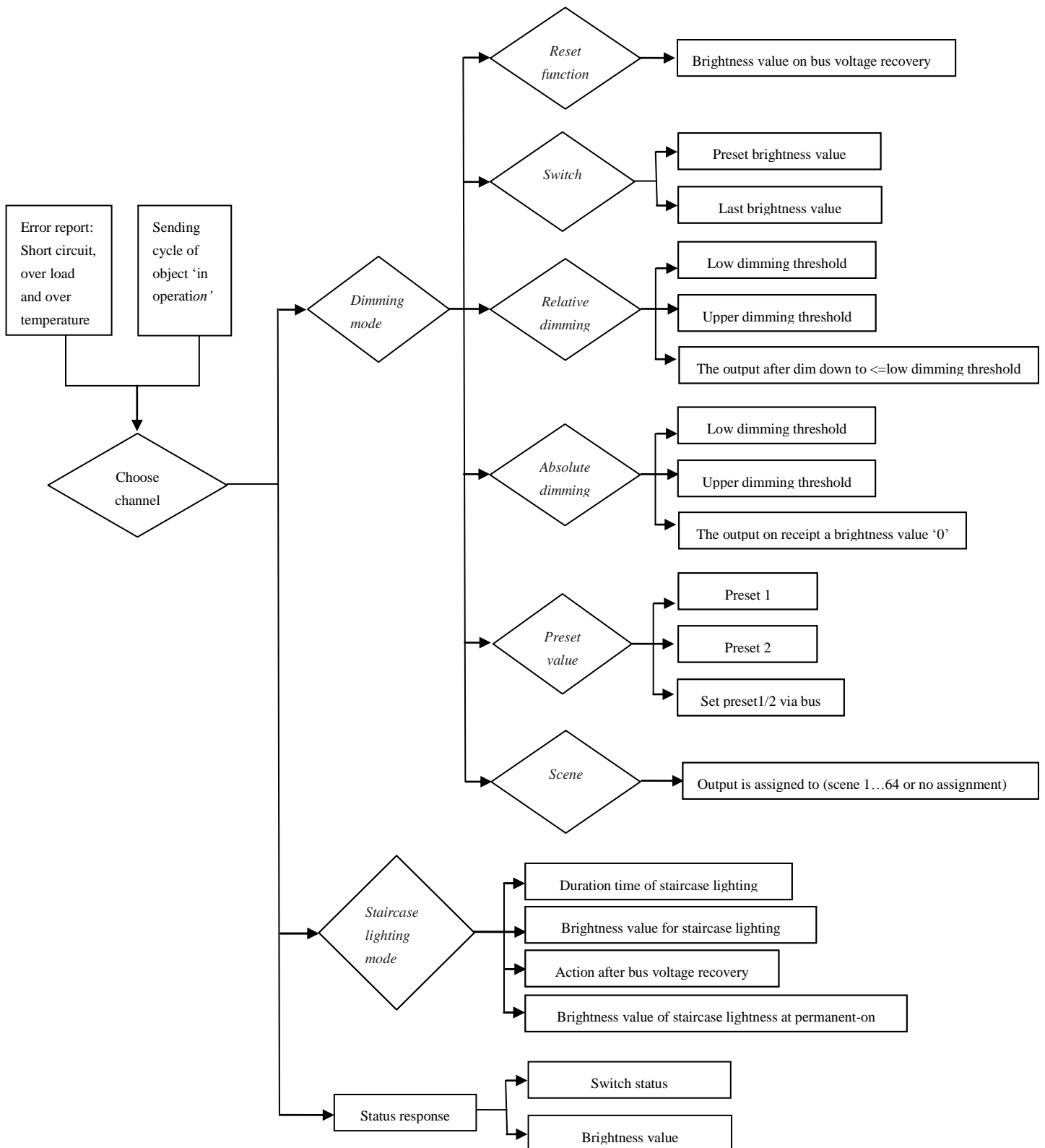
KA/D 0203.1



KA/D 0403.1

Function Overview

K-BUS®



Power supply	Working voltage	21-30V DC, via EIB bus
	Input voltage	230 V AC (50/60Hz)
Output	KA/D 0103.1---1 channel	Max. output capacity 500W per channel
	KA/D 0203.1---2 channels	Max. output capacity 500W per channel
	KA/D 0403.1---4 channels	Max. output capacity 400W per channel
	Output voltage	230 V AC (50/60Hz), short-circuit and excess temperature protection
	Max. Leakage Loss	5W
Connections	EIB/KNX	EIB bus connection terminal
	Input, Load Circuits	Screw terminals
Operation and display	Button and red LED	For assigning physical address
	Green LED flashing	Indicate the device running normally
Type of protection	IP 20 , EN 60 529	
Temperature	Operation	-5 °C ... + 45 °C
	Storage	-25 °C ... + 55 °C
	Transport	-25 °C ... + 70 °C
Ambient	Humidity	<93%, except dewing
Mounting	On 35mm DIN rail	
Dimensions	KA/D 0103.1--- 90×71.5×60 mm	
	KA/D 0203.1--- 90×143×60 mm	
	KA/D 0403.1--- 90×214.5×60 mm	
CE norm	In accordance with the EMC guideline and the low voltage guideline	
Certification	EIB/KNX certified	
Weight	KA/D 0103.1--- 0.3kg	
	KA/D 0203.1--- 0.5kg	
	KA/D 0403.1--- 0.75kg	